

On The Floor
Chart 1

- Opening form
- everyone facing backfield except flags, sousaphones, and percussion

- MT 16 (ms 1 - 4)

Piccolo = P1 - P8
Flute = F1 - F14
Clarinets = C1 - C21
Alto Sax = A1 - A20
Bari Sax = R1 - R4
Trumpet = T1 - T20
Mellophone = M1 - M8
Trombones = B1 - B12
Baritone/Tenor = O1 - O10
Tuba = U1 - U4
Snares = S1 - S8
Quads = Q1 - Q3
Bass Drums = D1 - D6
Cymbals = Y1 - Y6
Aux Carriers = X1 - X2
Flags = Flag Symbol 1 - 10

Director Viewpoint

On The Floor
Chart 4

- Float 16 counts (ms 5 - 8)
- MT 4 (ms 9)
- still facing backfield except flags, sousas and percussion

The arrows in the back are for the next move for Flutes 1 and 8 to use for the FTL

The chart is a 4x36 grid. The columns are numbered 5, 10, 15, 20, 25, 30, 35, 40, 45, 50, 55, 60. The rows are numbered 1, 2, 3, 4. The chart contains various letters (F, P, C, A, D, Q, X, Y, S, T, M, N) with small numbers next to them, indicating counts or steps. There are also arrows pointing to the right in the top row, and arrows pointing to the left in the bottom row. The chart is divided into sections by vertical lines corresponding to the column numbers.

Director Viewpoint

On The Floor
Chart 5

- woodwinds, trombones, and tones will follow the leader (FTL) for 32 to this position (ms 10 - 17)
- percussion, tubas, bari saxes will float slowly for 32 counts
- tpts & mellors on the even side will backward march 4, then slide into position for 28
- tpts 12, 14, 16, 18, 20 do the move above, but only slide 24 counts, then backward march into position in 4
- tpts & mellors on the odd side will backward march 8 then slide into position in 24

The grid contains the following notation:

Line 1 (Rhythmic): Stems with flags, some with dots above. Measure numbers 1-68 are indicated at the top.

Line 2 (Alphabet): P P P P F F F F C A A C C C F F F C B B A A C C C B A A A C C A A B B B O O O 25 . 30 . 35 . . 40 . 45 . 50 . 55 . 60 . 65 . 68

Line 3 (Alphabet): A A C C C F F F C B B A A C C C B A A A C C A A B B B O O O 25 . 30 . 35 . . 40 . 45 . 50 . 55 . 60 . 65 . 68

Line 4 (Alphabet): A A C C C F F F C B B A A C C C B A A A C C A A B B B O O O 25 . 30 . 35 . . 40 . 45 . 50 . 55 . 60 . 65 . 68

Director Viewpoint

On The Floor
Chart 7

- Float 12 to this position (ms 18 - 20)
- MT 4 and turn to the front (ms 21)
- back row of piccs, flutes, and the 2 altos and clarinets will do a FTL for 16 to this position.

Direction of Movement

THEN

- MT 8 (ms 22 - 23)
- all instruments facing backfield will turn to the front

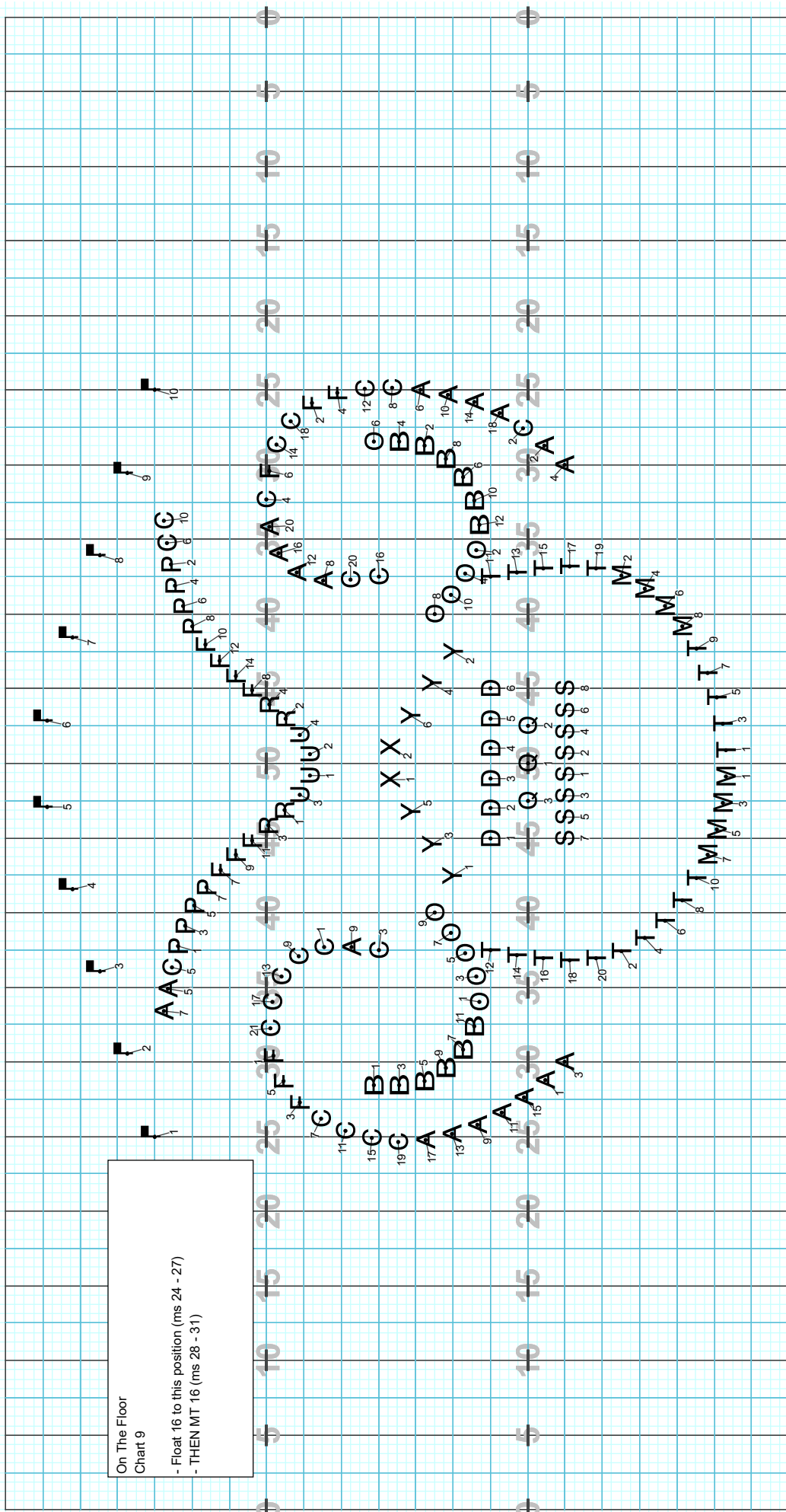
Director Viewpoint

The drill layout consists of a 10x20 grid with columns numbered 0-100 and rows numbered 0-45. The letters and numbers are arranged as follows:

- Row 0:** A, B, C, D, E, F, G, H, I, J, K, L, M, N, O, P, Q, R, S, T, U, V, W, X, Y, Z
- Row 5:** A, B, C, D, E, F, G, H, I, J, K, L, M, N, O, P, Q, R, S, T, U, V, W, X, Y, Z
- Row 10:** A, B, C, D, E, F, G, H, I, J, K, L, M, N, O, P, Q, R, S, T, U, V, W, X, Y, Z
- Row 15:** A, B, C, D, E, F, G, H, I, J, K, L, M, N, O, P, Q, R, S, T, U, V, W, X, Y, Z
- Row 20:** A, B, C, D, E, F, G, H, I, J, K, L, M, N, O, P, Q, R, S, T, U, V, W, X, Y, Z
- Row 25:** A, B, C, D, E, F, G, H, I, J, K, L, M, N, O, P, Q, R, S, T, U, V, W, X, Y, Z
- Row 30:** A, B, C, D, E, F, G, H, I, J, K, L, M, N, O, P, Q, R, S, T, U, V, W, X, Y, Z
- Row 35:** A, B, C, D, E, F, G, H, I, J, K, L, M, N, O, P, Q, R, S, T, U, V, W, X, Y, Z
- Row 40:** A, B, C, D, E, F, G, H, I, J, K, L, M, N, O, P, Q, R, S, T, U, V, W, X, Y, Z
- Row 45:** A, B, C, D, E, F, G, H, I, J, K, L, M, N, O, P, Q, R, S, T, U, V, W, X, Y, Z

Small black squares and arrows are placed at various grid intersections, indicating movement directions. For example, at (0,0), (5,0), (10,0), (15,0), (20,0), (25,0), (30,0), (35,0), (40,0), (45,0), (0,5), (5,5), (10,5), (15,5), (20,5), (25,5), (30,5), (35,5), (40,5), (45,5), (0,10), (5,10), (10,10), (15,10), (20,10), (25,10), (30,10), (35,10), (40,10), (45,10), (0,15), (5,15), (10,15), (15,15), (20,15), (25,15), (30,15), (35,15), (40,15), (45,15), (0,20), (5,20), (10,20), (15,20), (20,20), (25,20), (30,20), (35,20), (40,20), (45,20), (0,25), (5,25), (10,25), (15,25), (20,25), (25,25), (30,25), (35,25), (40,25), (45,25), (0,30), (5,30), (10,30), (15,30), (20,30), (25,30), (30,30), (35,30), (40,30), (45,30), (0,35), (5,35), (10,35), (15,35), (20,35), (25,35), (30,35), (35,35), (40,35), (45,35), (0,40), (5,40), (10,40), (15,40), (20,40), (25,40), (30,40), (35,40), (40,40), (45,40), (0,45), (5,45), (10,45), (15,45), (20,45), (25,45), (30,45), (35,45), (40,45), (45,45).

On The Floor
 Chart 9
 - Float 16 to this position (ms 24 - 27)
 - THEN MT 16 (ms 28 - 31)



Director Viewpoint

On The Floor
Chart 11

- Float 28 to this position (ms 32 - 39), then MT 4 (ms 39)
- Tpts & Mellos do a FTL facing direction of move to this form. Horns down on this move, then back up at the end.

Director Viewpoint

On The Floor
 Chart 12
 - Float 32 to this position
 (ms 40 - 47)

The grid contains the following elements:

- Column 1: A (9, 13, 17, 19, 23)
- Column 2: A (9, 13, 17, 19, 23)
- Column 3: A (9, 13, 17, 19, 23)
- Column 4: A (9, 13, 17, 19, 23)
- Column 5: A (9, 13, 17, 19, 23)
- Column 6: A (9, 13, 17, 19, 23)
- Column 7: A (9, 13, 17, 19, 23)
- Column 8: A (9, 13, 17, 19, 23)
- Column 9: A (9, 13, 17, 19, 23)
- Column 10: A (9, 13, 17, 19, 23)
- Column 11: A (9, 13, 17, 19, 23)
- Column 12: A (9, 13, 17, 19, 23)
- Column 13: A (9, 13, 17, 19, 23)
- Column 14: A (9, 13, 17, 19, 23)
- Column 15: A (9, 13, 17, 19, 23)
- Column 16: A (9, 13, 17, 19, 23)
- Column 17: A (9, 13, 17, 19, 23)
- Column 18: A (9, 13, 17, 19, 23)
- Column 19: A (9, 13, 17, 19, 23)
- Column 20: A (9, 13, 17, 19, 23)

On The Floor
Chart 13
- Float 32 to this position
(ms 48 - 55)

The diagram shows a person's movements on a grid. The person is represented by a small figure with a head, torso, and legs. The movements are indicated by arrows and numbers, showing a sequence of steps and turns. The grid is labeled with numbers 0, 5, 10, 15, 20, 25, 30, 35, 40, 45, 50, 55 along the top and bottom edges. The musical notation consists of letters (A, C, G, F, P, R, U, X, D, Q, S, O, B, T) and numbers (1-21) arranged in a pattern that corresponds to the person's path. The letters are often grouped together, and the numbers indicate the order of the notes or steps. The path starts at the top left and moves generally downwards and to the right, ending at the bottom right.

Director Viewpoint

On The Floor
Chart 14

- Float 20 to this position (ms 56 - 60)
- Then MT 4 and Halt (ms 61 - 62)
- Horns down on 3 of ms 62

The chart is a large grid with a vertical axis labeled 5, 10, 15, 20, 25, 30, 35, 40, 45, 50, 55, 60 and a horizontal axis labeled 5, 10, 15, 20, 25, 30, 35, 40, 45, 50, 55, 60. The grid contains musical notation and movement instructions. The notation includes letters (A, C, F, P, X, D, S, T, M, B) and numbers (1-19) indicating counts or measures. Some letters are accompanied by small square icons representing musical notes or rests. The instructions are as follows:

- Row 5:** A A C F F F P (measures 1-7)
- Row 6:** C A C C C C C (measures 1-9)
- Row 7:** F F F C C C C (measures 1-7)
- Row 8:** A A A A A A A (measures 1-17)
- Row 9:** O O O O O (measures 1-5)
- Row 10:** B B B B B (measures 1-5)
- Row 11:** T T T T T (measures 1-4)
- Row 12:** T T T T T (measures 1-4)
- Row 13:** M M M M M (measures 1-4)
- Row 14:** M M M M M (measures 1-4)
- Row 15:** S S S S S (measures 1-7)
- Row 16:** X X X X X X X (measures 1-6)
- Row 17:** D D D D D (measures 1-5)
- Row 18:** Q Q Q Q Q (measures 1-5)
- Row 19:** U U R R R R R U U (measures 1-6)
- Row 20:** P P P P P (measures 1-5)
- Row 21:** P P P P P (measures 1-5)
- Row 22:** F F F F F C C (measures 1-10)
- Row 23:** C A A A A C C (measures 1-10)
- Row 24:** P F F F F C C (measures 1-10)

Director Viewpoint